



Forming The Future™

PATTERN 15205B Rail Window Block Out

GrayLastic™

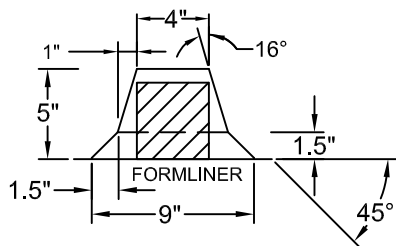
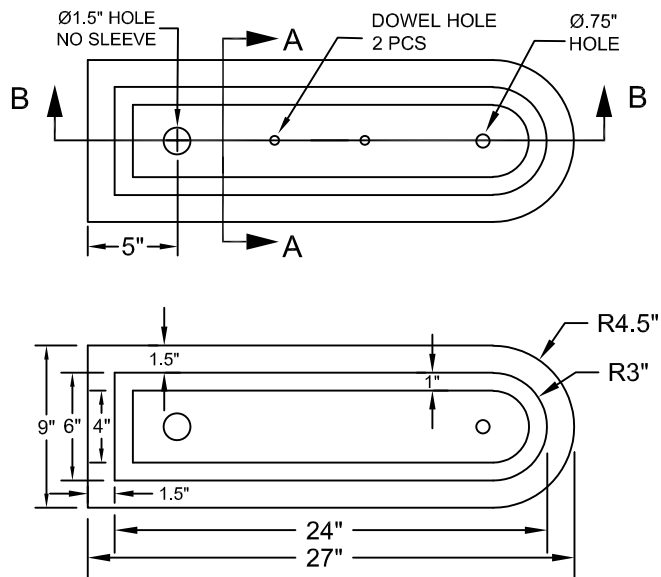
Elastomeric Urethane - up to 100 uses.
Mold bonded to 0.75" plywood. Add 1.125" to liner thickness.

Geometric

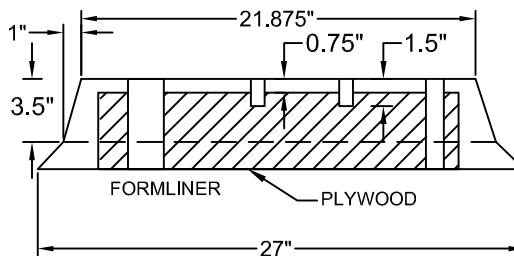
Part Size: 9" W x 27" H

Max Depth: 5"

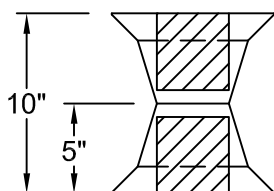
Draft: 1" (16°)



**SECTION A-A
END VIEW
SINGLE LINER**

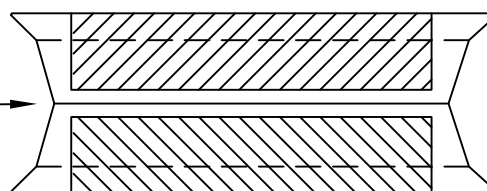


**SECTION B-B
END VIEW
SINGLE LINER**



**END VIEW
SET OF LINERS**

JOINT WHERE
MOLD CAN BE
TAKEN APART



**END VIEW
SET OF LINERS**

This document contains confidential and proprietary information of Fitzgerald Formliners, Inc. and is protected by copyright, trade secret, and other state and federal laws. Its receipt or possession does not cover any rights to reproduce, disclose its contents, or to manufacture, use, or sell anything it may describe. Reproduction, disclosure, or use without specific written authorization of Fitzgerald Formliners, Inc. is strictly forbidden.

FITZGERALD FORMLINERS

1500 East Chestnut Avenue • Santa Ana, CA 92701 • Fax (714) 245-9715

Ph: (800) 547-7760 • Ph (714) 547-6710 • www.formliners.com

Pattern can be requested in AutoCad format.

File Name: S-15205B-GR-03-15-24

Page 1