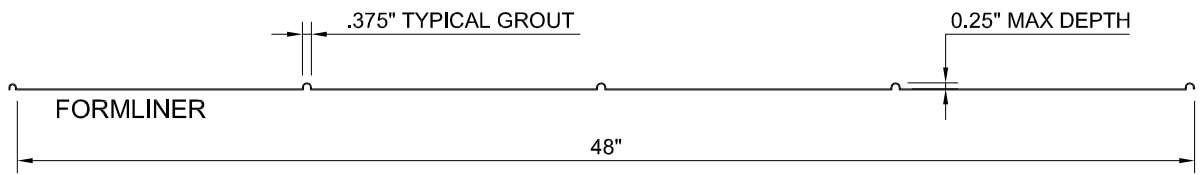
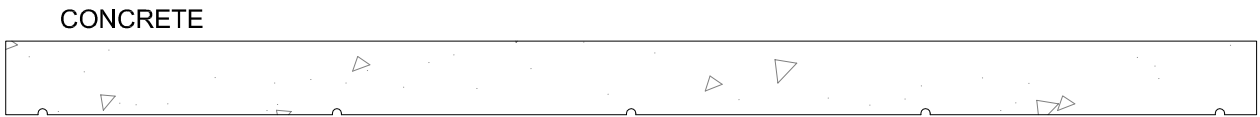
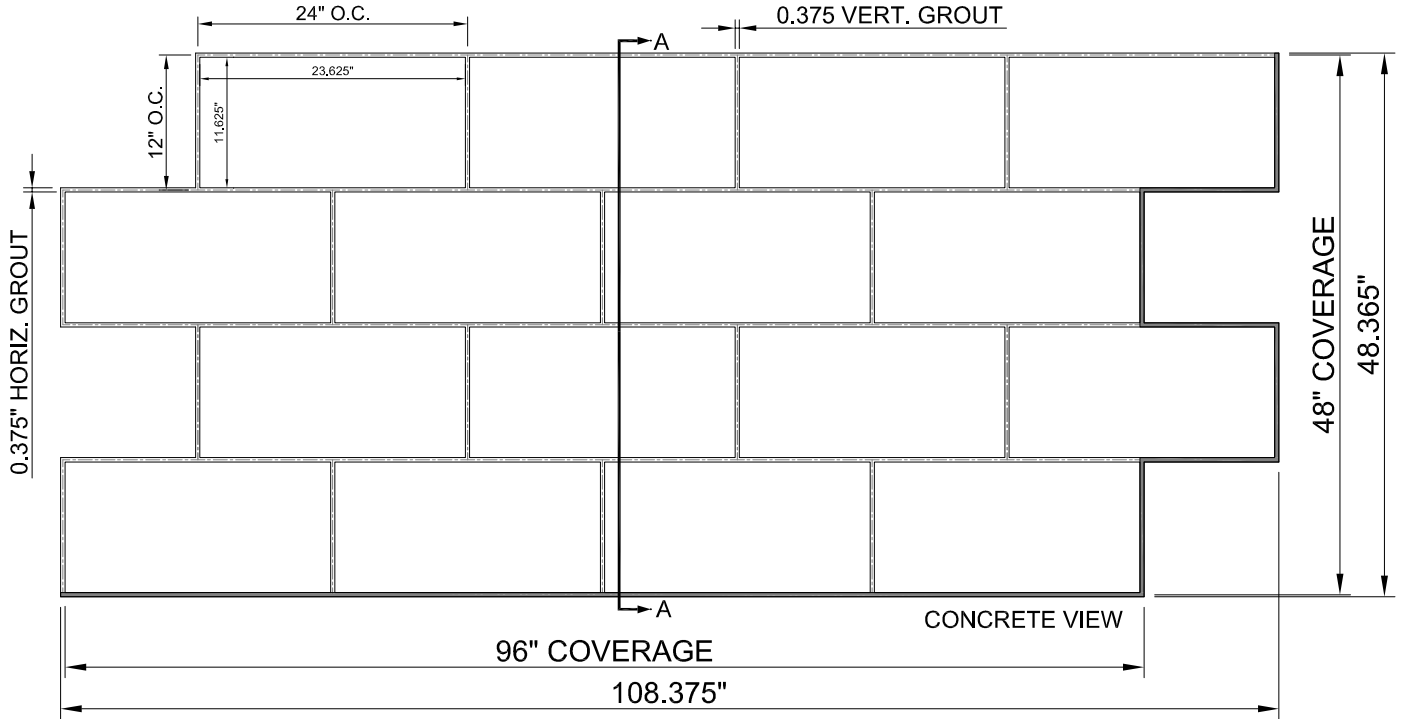




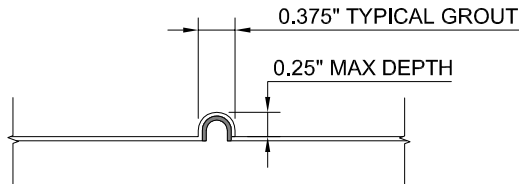
Forming The Future™

**PATTERN 18058LP**  
**24" x 12" Smooth Block**  
 Running Bond / Tool Joint  
 Finger Joint  
**Fitzlok™**  
 Styrene - Single Use.

**Masonry**  
**Part Size:** 108.375"W x 48.375"H  
**Part Coverage:** 96"W X 48"H (32 ft²)  
**Max Depth:** 0.25"  
**Block Size:** 23.625"W X 11.625"H  
**Mortar Joints:** 0.375" Horizontal  
 0.375" Vertical



SECTION A-A



SHADED AREA FOR OVERLAP

OVERLAP FORMLINER DETAIL



This document contains confidential and proprietary information of Fitzgerald Formliners, Inc. and is protected by copyright, trade secret, and other state and federal laws. Its receipt or possession does not cover any rights to reproduce, disclose its contents, or to manufacture, use, or sell anything it may describe. Reproduction, disclosure, or use without specific written authorization of Fitzgerald Formliners, Inc. is strictly forbidden.