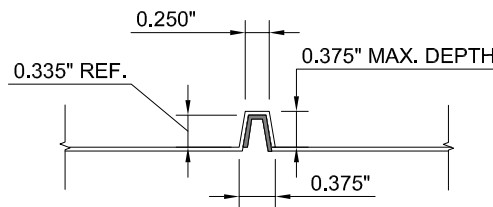
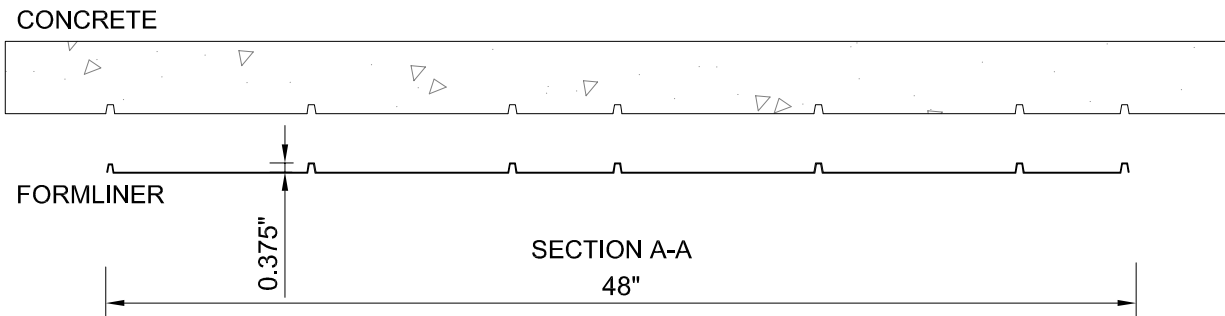
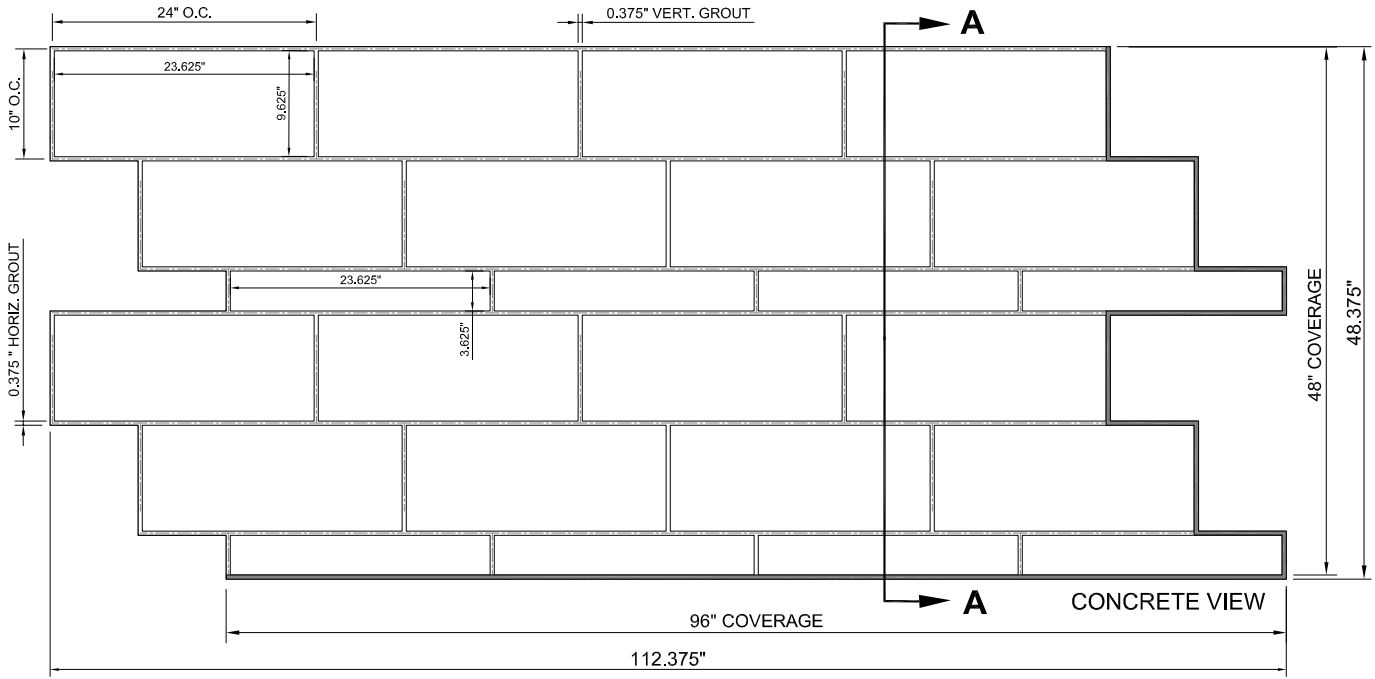




PATTERN 17003LP
Mankato Quarried Stone
 Random Field Stone 1/3 - 2/3
 Running Bond / Rake Joint

Fitzlok™
 Styrene - Single Use.

Stone & Rock
Part Size: 112.375"W x 48.375"H
Part Coverage: 96"W X 48"H (32 ft²)
Max Depth: 0.375"
Block Size: 23.625"W x 9.625" & 3.625"H
Mortar Joints: 0.375" Horizontal
 0.375" Vertical



SHADED AREA FOR OVERLAP

OVERLAP FORMLINER DETAIL

This document contains confidential and proprietary information of Fitzgerald Formliners, Inc. and is protected by copyright, trade secret, and other state and federal laws. Its receipt or possession does not cover any rights to reproduce, disclose its contents, or to manufacture, use, or sell anything it may describe. Reproduction, disclosure, or use without specific written authorization of Fitzgerald Formliners, Inc. is strictly forbidden.