

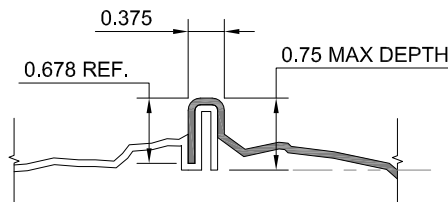
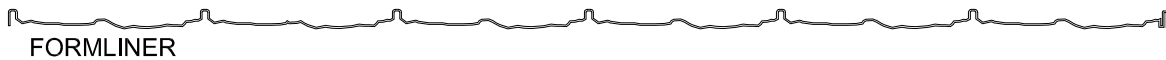
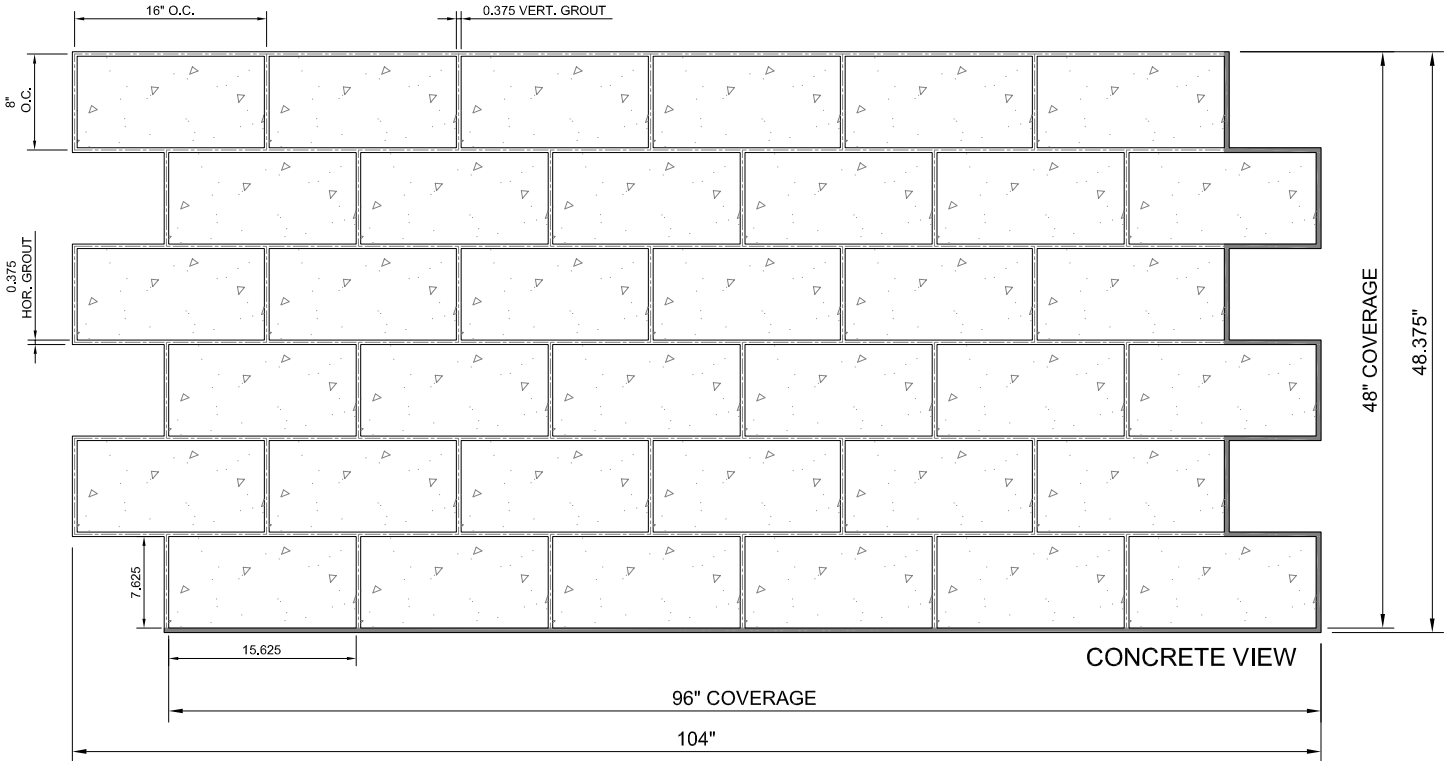


Forming The Future™

PATTERN 16971LP
Splitfaced Running Bond
 8" x 16" Running Bond Block
 Finger Joint
 Fitzlok™

Styrene - Single Use.

Masonry -
 Part Size: 104"W x 48.375"H
 Part Coverage: 96"W X 48"H (32 ft²)
 Max Depth: 0.75"
 Block Size: 7.625"W x 15.625"H
 Mortar Joints: 0.375" Horizontal
 0.375" Vertical



SHADED AREA FOR OVERLAY

FORMLINER DETAIL

This document contains confidential and proprietary information of Fitzgerald Formliners, Inc. and is protected by copyright, trade secret, and other state and federal laws. Its receipt or possession does not cover any rights to reproduce, disclose its contents, or to manufacture, use, or sell anything it may describe. Reproduction, disclosure, or use without specific written authorization of Fitzgerald Formliners, Inc. is strictly forbidden.