



Forming The Future™

PATTERN 16938

1.5" Wide Plank, Random Depth

GrayLastic™

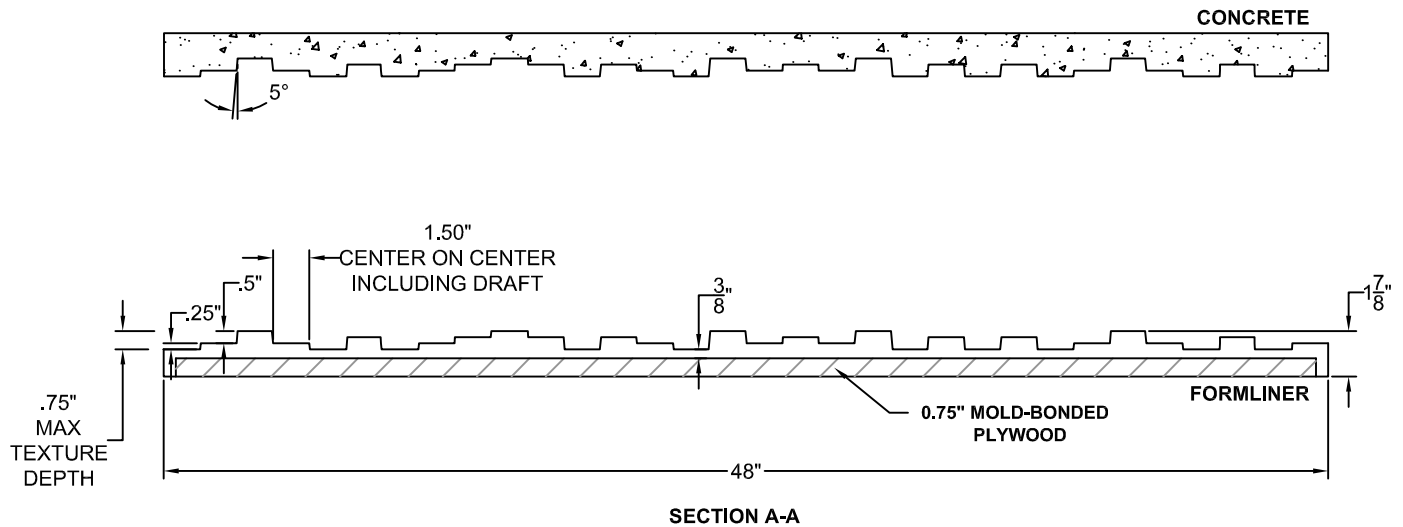
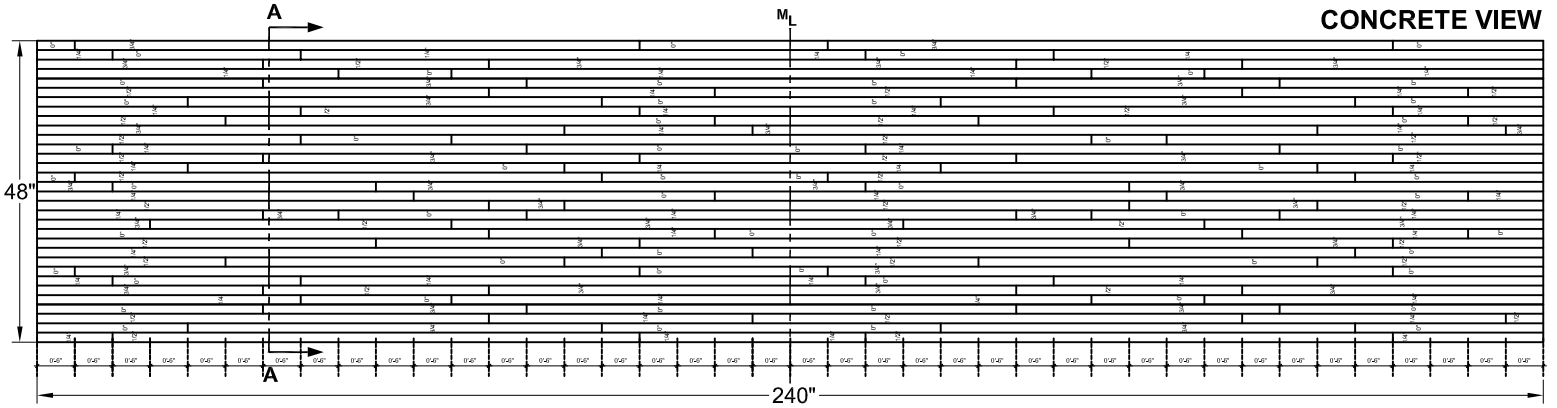
Elastomeric Urethane - up to 100 uses.
Mold bonded to 0.75" plywood. Add 1.125" to liner thickness.

Wooden Plank

Part Size: 48" W x 240" H

Max Depth: 0.75"

Draft: 5°



FITZGERALD FORMLINERS

1500 East Chestnut Avenue • Santa Ana, CA 92701 • Fax (714) 245-9715

Ph: (800) 547-7760 • Ph (714) 547-6710 • www.formliners.com

Pattern can be requested in AutoCad format.

File Name: S-16938-VF 12-02-11

Page 1 of 2



Forming The Future™

PATTERN 16938

1.5" Wide Plank, Random Depth

GrayLastic™

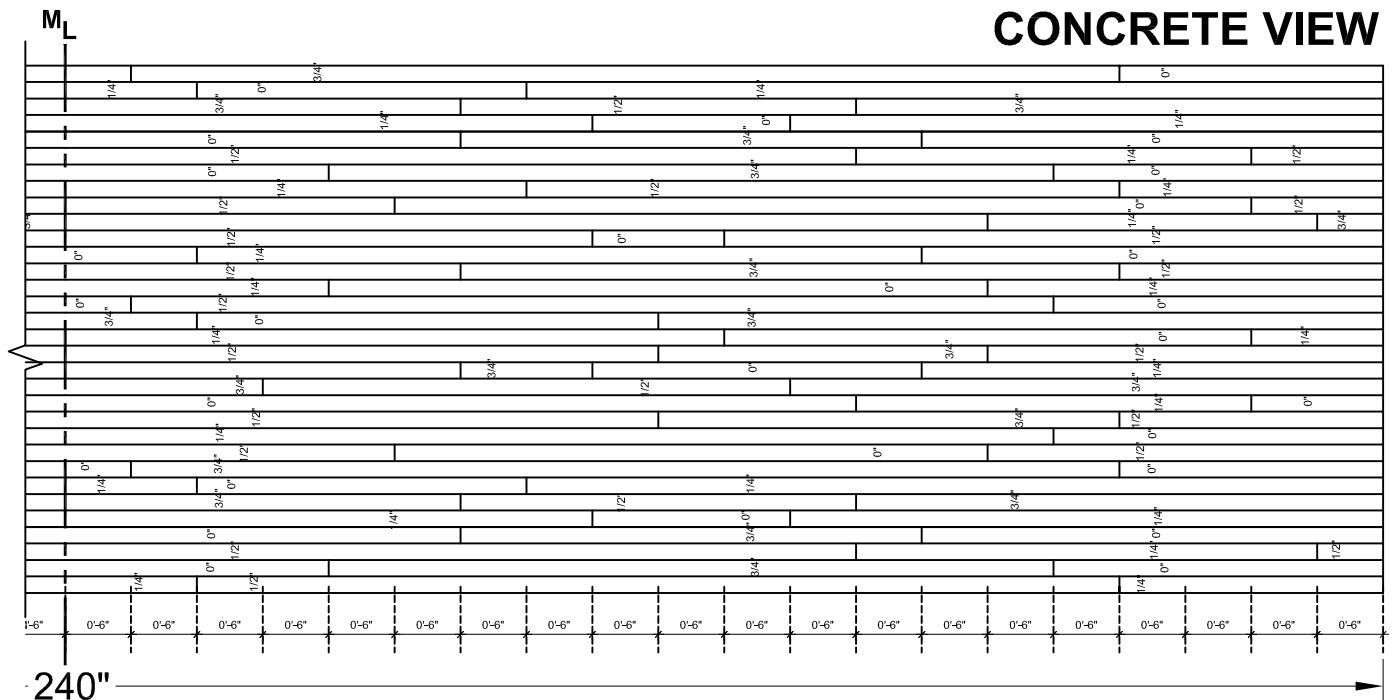
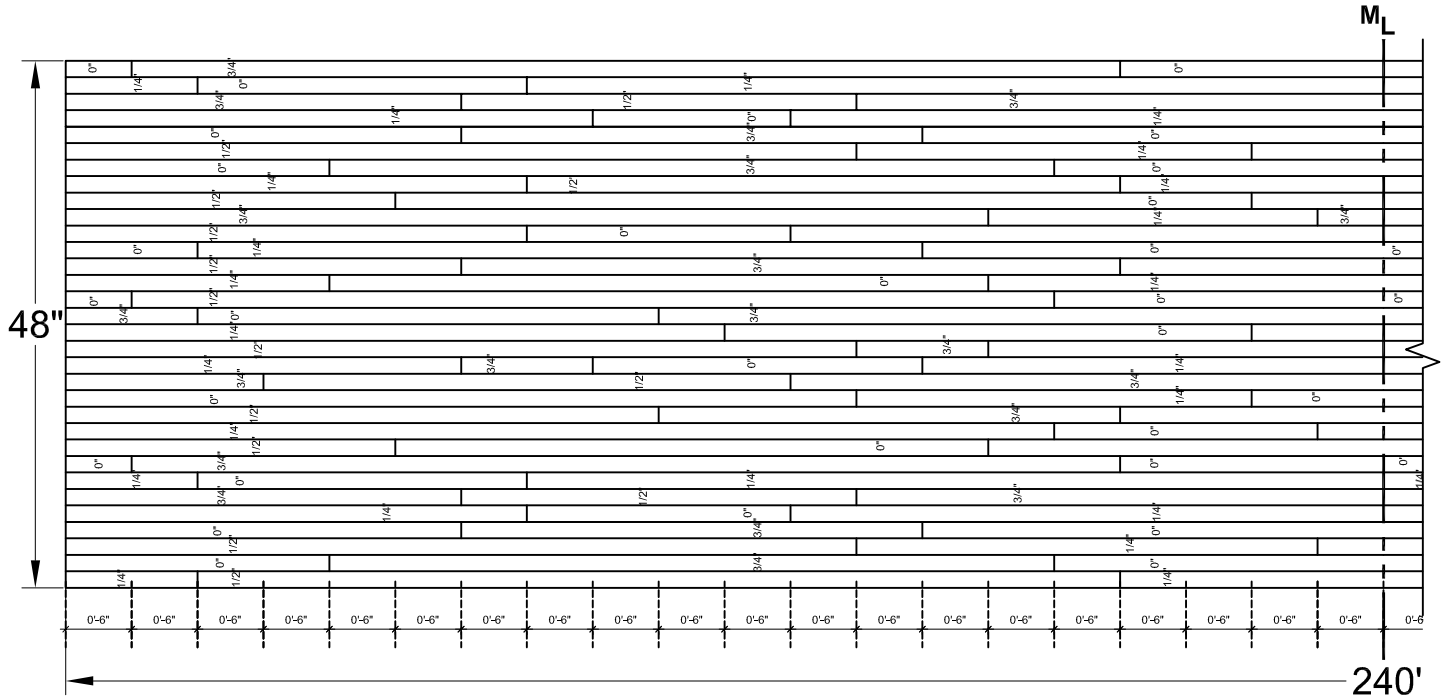
Elastomeric Urethane - up to 100 uses.
Mold bonded to 0.75" plywood. Add 1.125" to liner thickness.

Wooden Plank

Part Size: 48" W x 240" H

Max Depth: 0.75"

Draft: 5°



FITZGERALD FORMLINERS

1500 East Chestnut Avenue • Santa Ana, CA 92701 • Fax (714) 245-9715

Ph: (800) 547-7760 • Ph (714) 547-6710 • www.formliners.com

Pattern can be requested in AutoCad format.

File Name: S-16938-VF 12-02-11

Page 2 of 2