



PATTERN 17000

Florida Ashlar

Linear Cut Ashlar Stone

GrayLastic™

Elastomeric Urethane - up to 100 uses.
Mold bonded to 0.75" plywood. Add 1.125" to liner thickness.

Stone & Rock

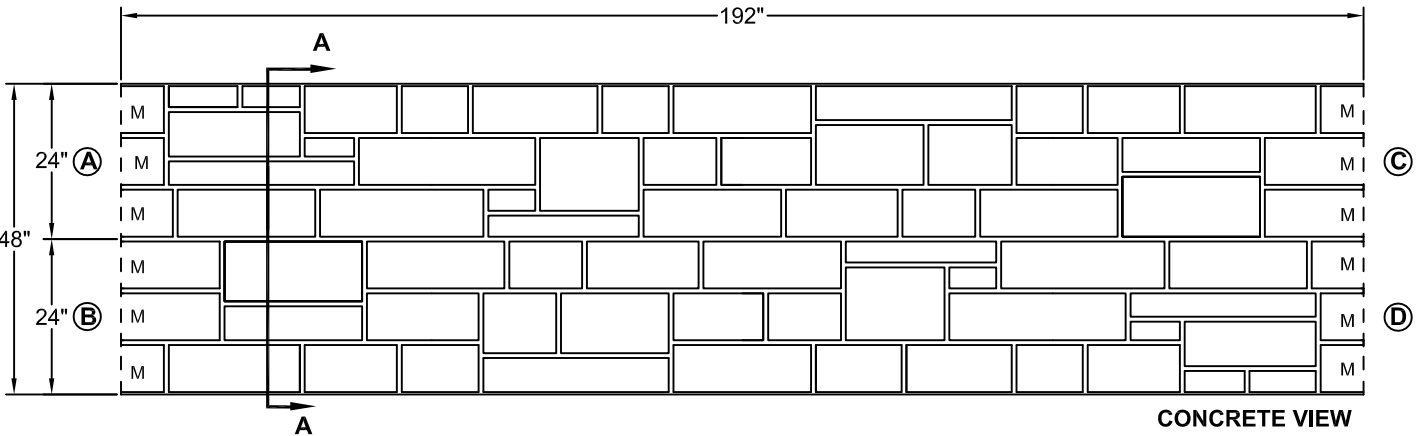
Part Size: 192" W x 48" H

Grout Width: 0.75"

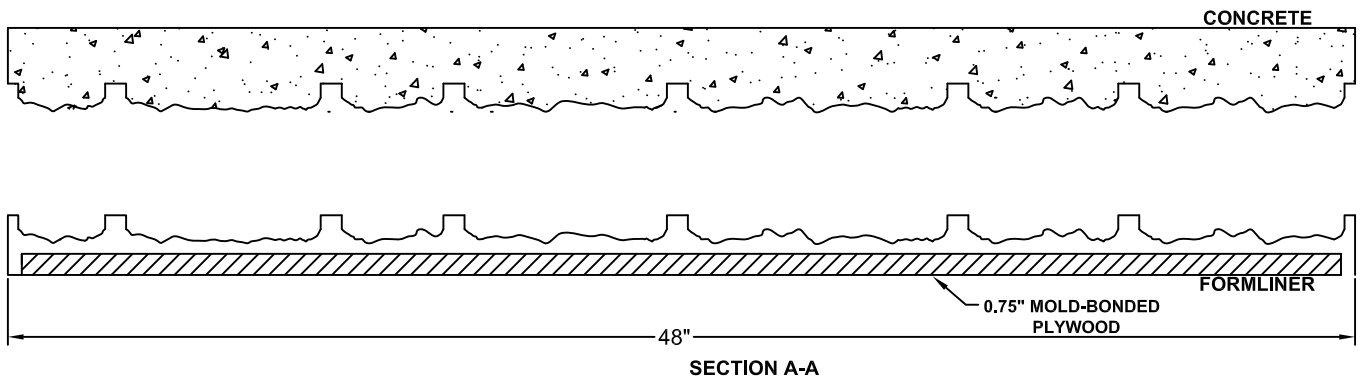
Max Depth: 1.0"

Stone Sizes: 7"- 28" W
3"- 12" H

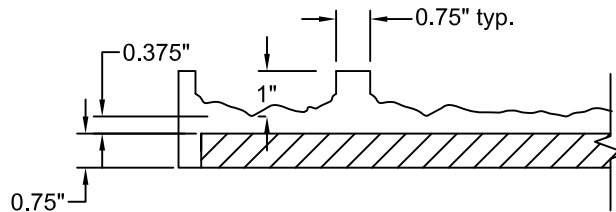
Pattern matched when A, B, C,
and D rotated or side to side



CONCRETE VIEW



SECTION A-A



This document contains confidential and proprietary information of Fitzgerald Formliners, Inc. and is protected by copyright, trade secret, and other state and federal laws. Its receipt or possession does not cover any rights to reproduce, disclose its contents, or to manufacture, use, or sell anything it may describe. Reproduction, disclosure, or use without specific written authorization of Fitzgerald Formliners, Inc. is strictly forbidden.