



Forming The Future™

# PATTERN 16999

## Georgia Ashlar

Linear cut ashlar block

### GrayLastic™

Elastomeric Urethane - up to 100 uses.  
Mold bonded to 0.75" plywood. Add 1.125" to liner thickness.

### Stone & Rock

Part Size: 220.5" W x 48" H

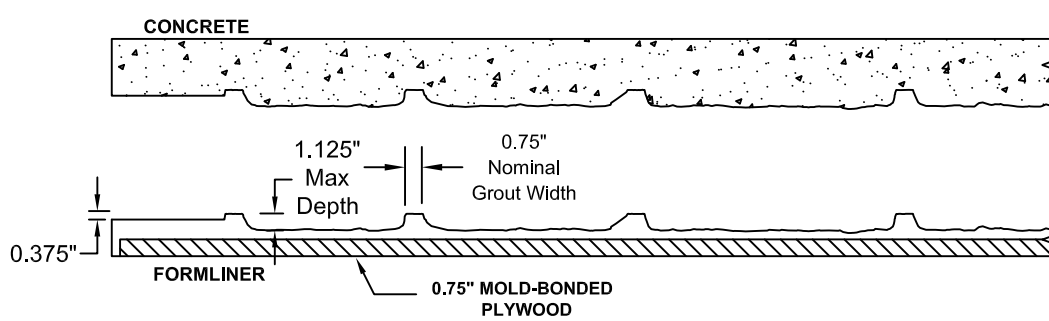
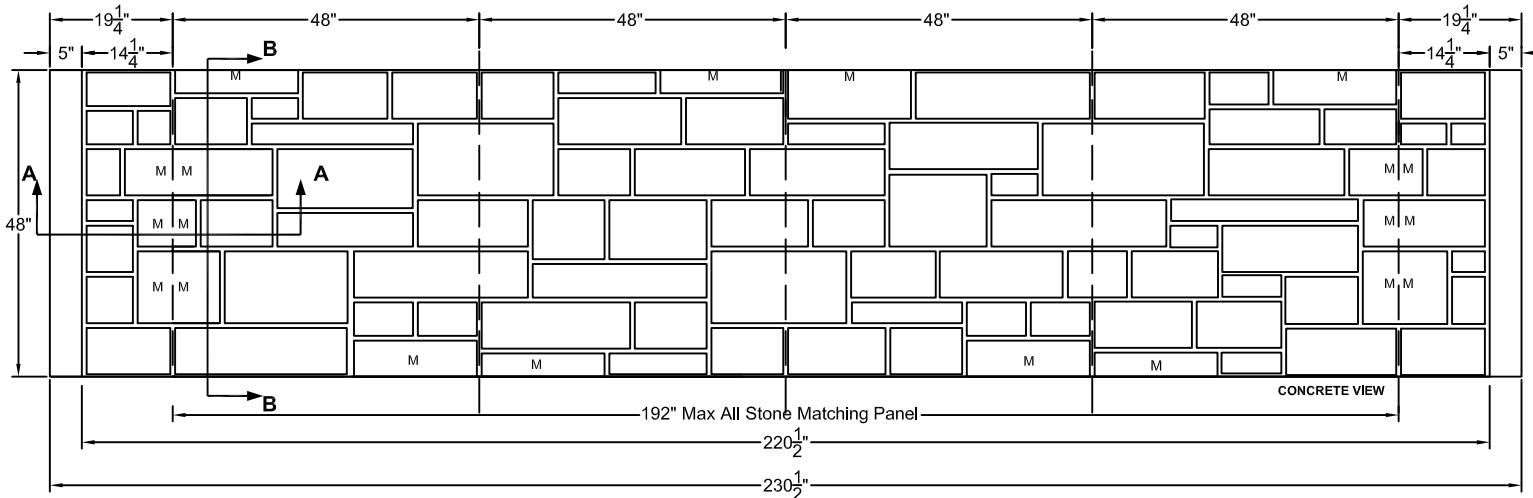
Max Depth: 1.125"

Stone Sizes: 7"- 28" W  
3"- 12" H

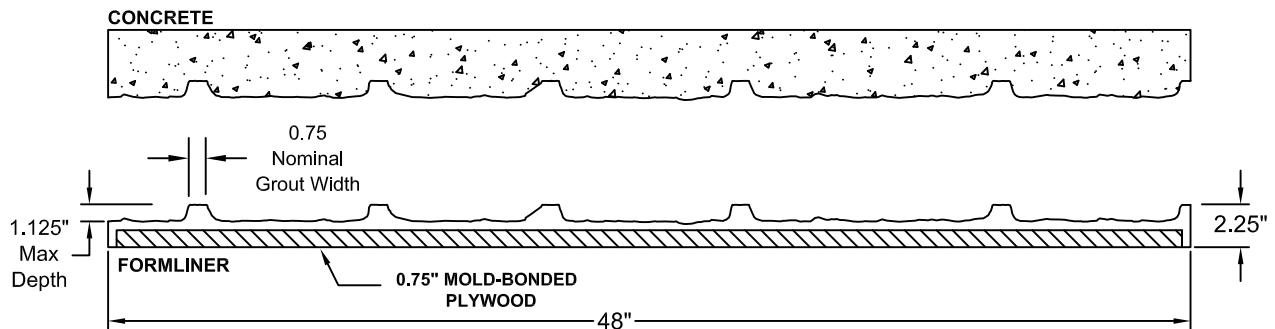
M= Match point

Dashed line indicates  
vertical match point locations

192" Max All Stone Matching Panel



SECTION A-A  
FORMLINER DETAIL



SECTION B-B  
FORMLINER DETAIL

This document contains confidential and proprietary information of Fitzgerald Formliners, Inc. and is protected by copyright, trade secret, and other state and federal laws. Its receipt or possession does not cover any rights to reproduce, disclose its contents, or to manufacture, use, or sell anything it may describe. Reproduction, disclosure, or use without specific written authorization of Fitzgerald Formliners, Inc. is strictly forbidden.

# FITZGERALD FORMLINERS

1500 East Chestnut Avenue • Santa Ana, CA 92701 • Fax (714) 245-9715  
Ph: (800) 547-7760 • Ph (714) 547-6710 • www.formliners.com

Pattern can be requested in AutoCad format.

File Name: S-16999-GR-9-27-07

Page 1 of 2



Forming The Future™

# PATTERN 16999

## Georgia Ashlar

Linear cut ashlar block

### GrayLastic™

Elastomeric Urethane - up to 100 uses.  
Mold bonded to 0.75" plywood. Add 1.125" to liner thickness.

### Stone & Rock

Part Size: 220.5" W x 48" H

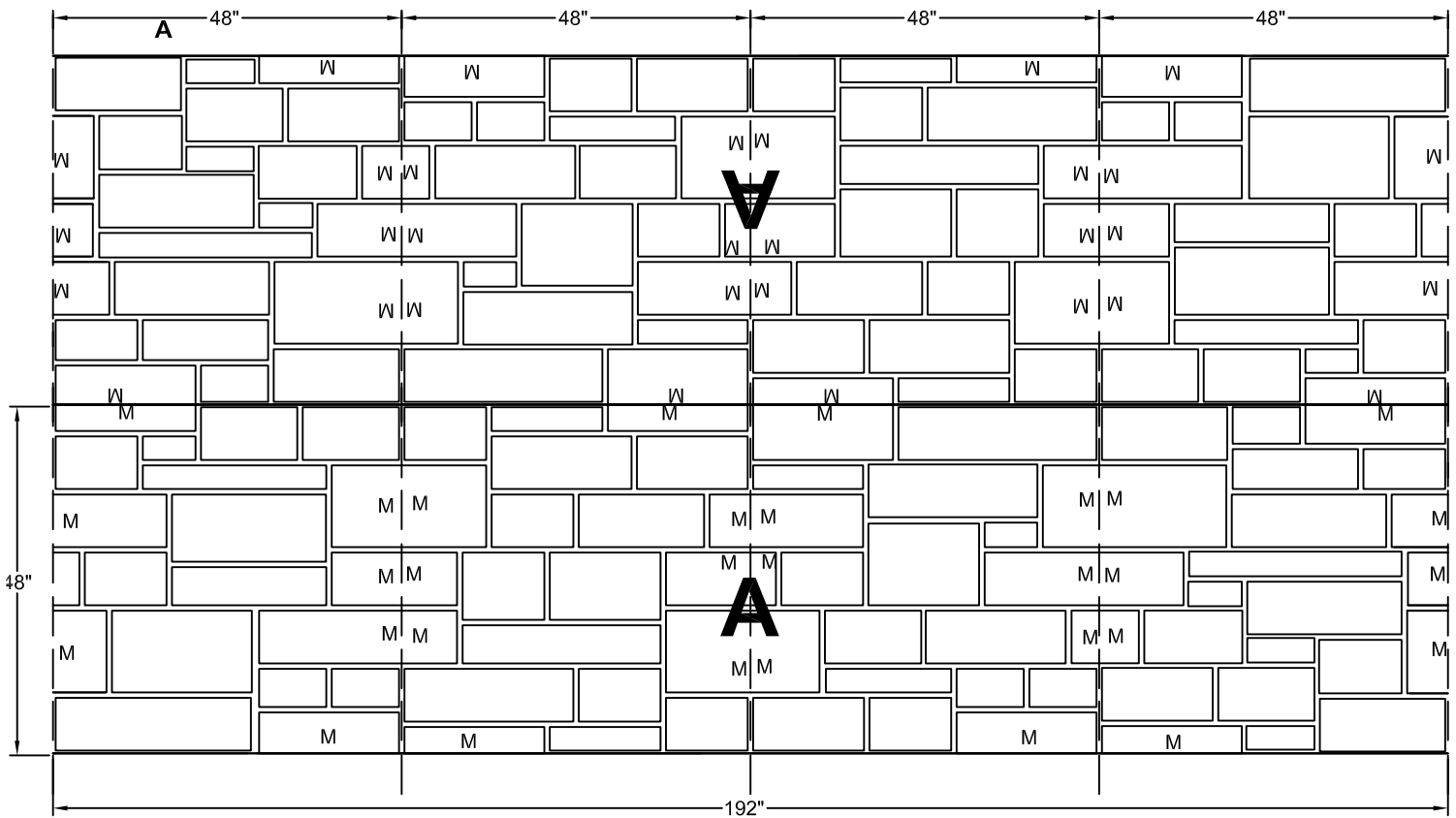
Max Depth: 1.125"

Stone Sizes: 7"- 28" W  
3"- 12" H

M= Match point

Dashed line indicates  
vertical match point locations

192" Max All Stone Matching Panel



This document contains confidential and proprietary information of Fitzgerald Formliners, Inc. and is protected by copyright, trade secret, and other state and federal laws. Its receipt or possession does not cover any rights to reproduce, disclose its contents, or to manufacture, use, or sell anything it may describe. Reproduction, disclosure, or use without specific written authorization of Fitzgerald Formliners, Inc. is strictly forbidden.

## FITZGERALD FORMLINERS

1500 East Chestnut Avenue • Santa Ana, CA 92701 • Fax (714) 245-9715  
Ph: (800) 547-7760 • Ph (714) 547-6710 • www.formliners.com

Pattern can be requested in AutoCad format.

File Name: S-16999-GR-9-27-07

Page 2 of 2