



Forming The Future™

PATTERN 18055LP

24" Smooth Block

Running Bond

Finger Joint

Fitzlok™

Styrene - Single Use.

Masonry

Part Size: 40.375"W x 20.375"H

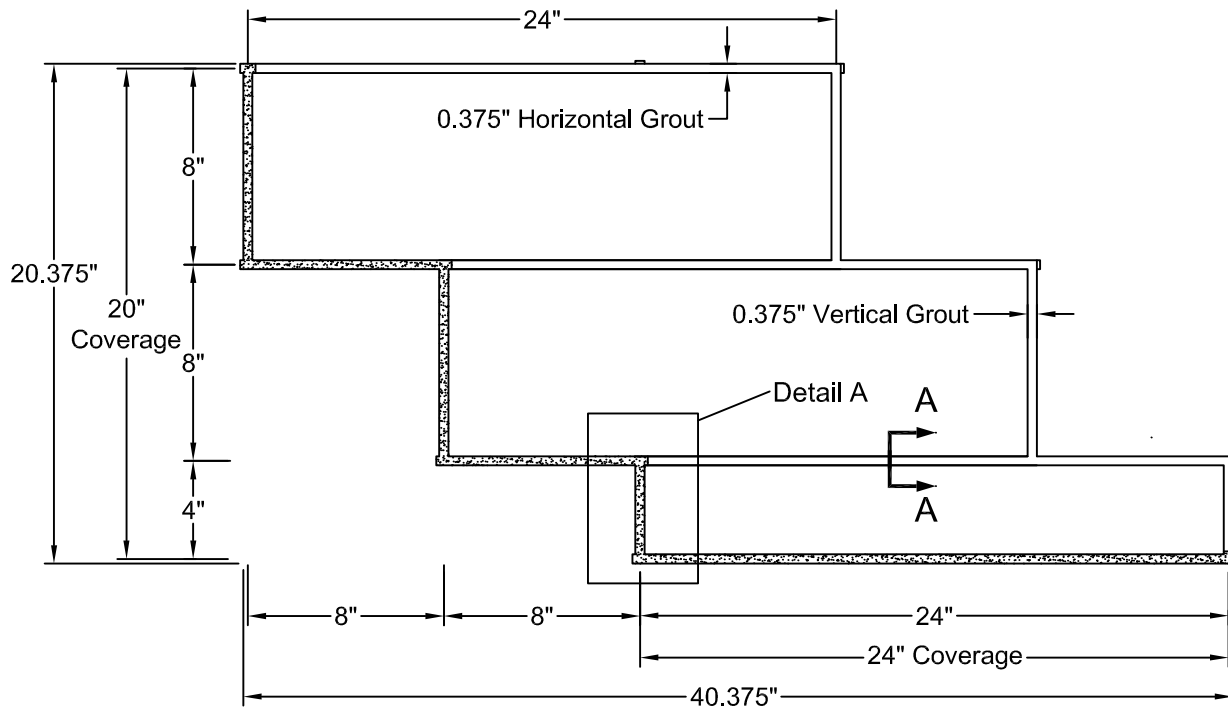
Part Coverage: 24"W x 20"H (3.33 ft.²)

Max Depth: 0.375"

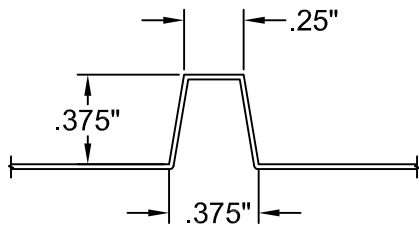
Block Size: 24" W x 8" H & 24" W x 4" H

Mortar Joints: 0.375"

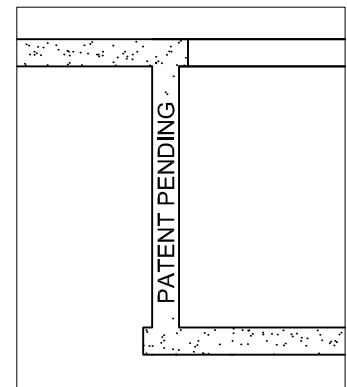
Patent Pending



Shaded Area
for part overlay



Section A-A



Detail A

PATENT PENDING

This document contains confidential and proprietary information of Fitzgerald Formliners, Inc. and is protected by copyright, trade secret, and other state and federal laws. Its receipt or possession does not cover any rights to reproduce, disclose its contents, or to manufacture, use, or sell anything it may describe. Reproduction, disclosure, or use without specific written authorization of Fitzgerald Formliners, Inc. is strictly forbidden.

FITZGERALD FORMLINERS

1500 East Chestnut Avenue • Santa Ana, CA 92701 • Fax (714) 245-9715

Ph: (800) 547-7760 • Ph (714) 547-6710 • www.formliners.com

Pattern can be requested in AutoCad format.

File Name: S-18055LP-VF-10-21-09

Page 1 of 1