



Forming The Future™

PATTERN 16999 Georgia Ashlar

Linear Cut Ashlar Block

Vac-U-Form™

Styrene - Single Use.
ABS Plastic - Up to 15 reuses.

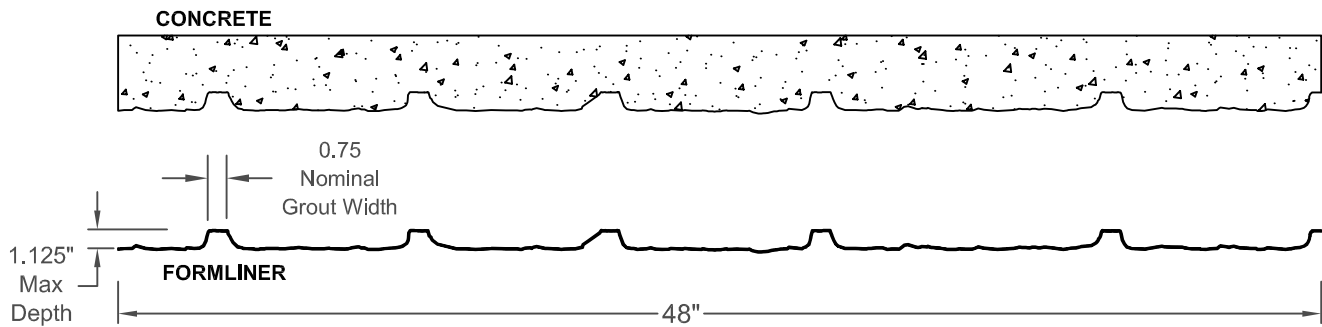
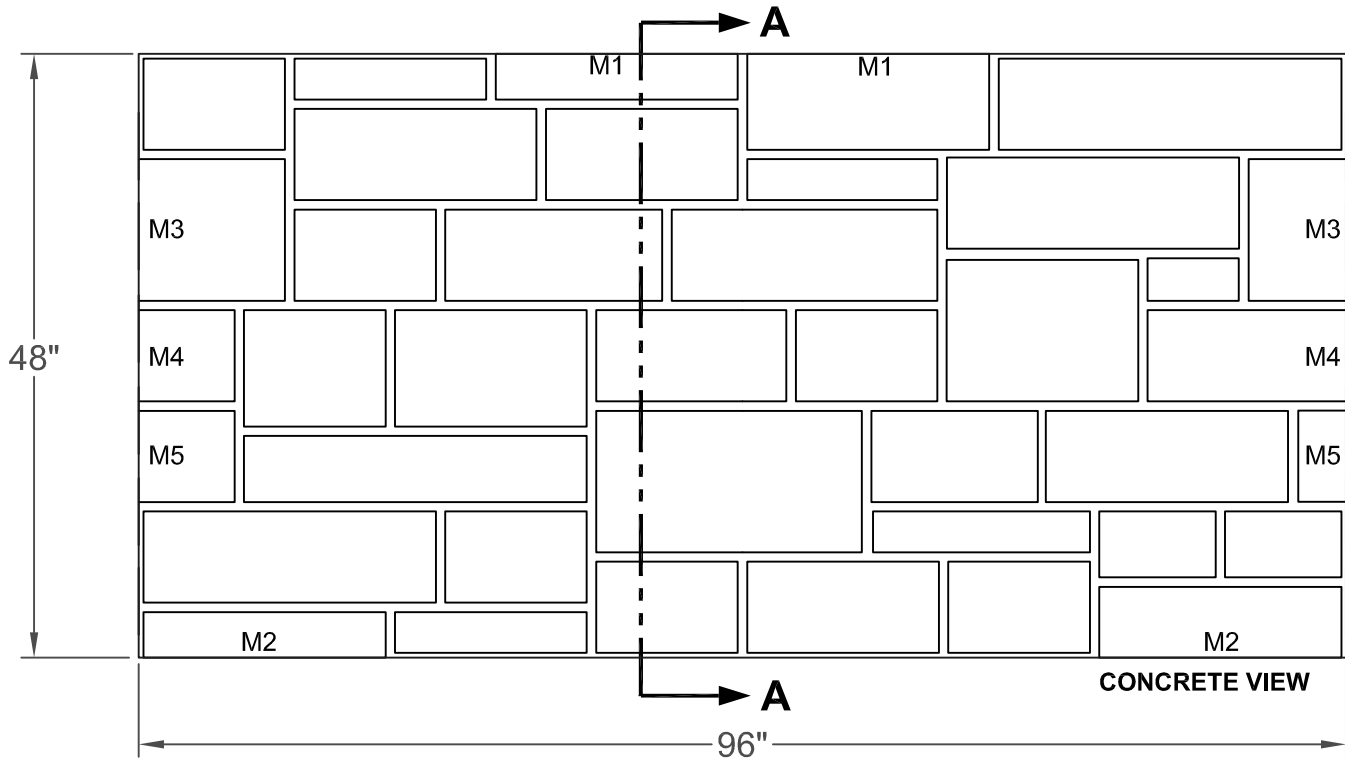
Stone & Rock

Part Size: 96" W x 48" H

Max Depth: 1.125"

Stone Sizes: 7"- 28" W
3"- 12" H

M= Match point



SECTION A-A

FORMLINER DETAIL

This document contains confidential and proprietary information of Fitzgerald Formliners, Inc. and is protected by copyright, trade secret, and other state and federal laws. Its receipt or possession does not cover any rights to reproduce, disclose its contents, or to manufacture, use, or sell anything it may describe. Reproduction, disclosure, or use without specific written authorization of Fitzgerald Formliners, Inc. is strictly forbidden.

FITZGERALD FORMLINERS

1500 East Chestnut Avenue • Santa Ana, CA 92701 • Fax (714) 245-9715

Ph: (800) 547-7760 • Ph (714) 547-6710 • www.formliners.com

Pattern can be requested in AutoCad format.

File Name: S-16999-VF-5-4-10

Page 1 of 2



PATTERN 16999

Georgia Ashlar

Linear Cut Ashlar Block

Vac-U-Form™

Styrene - Single Use.
ABS Plastic - Up to 15 reuses.

Forming The Future™

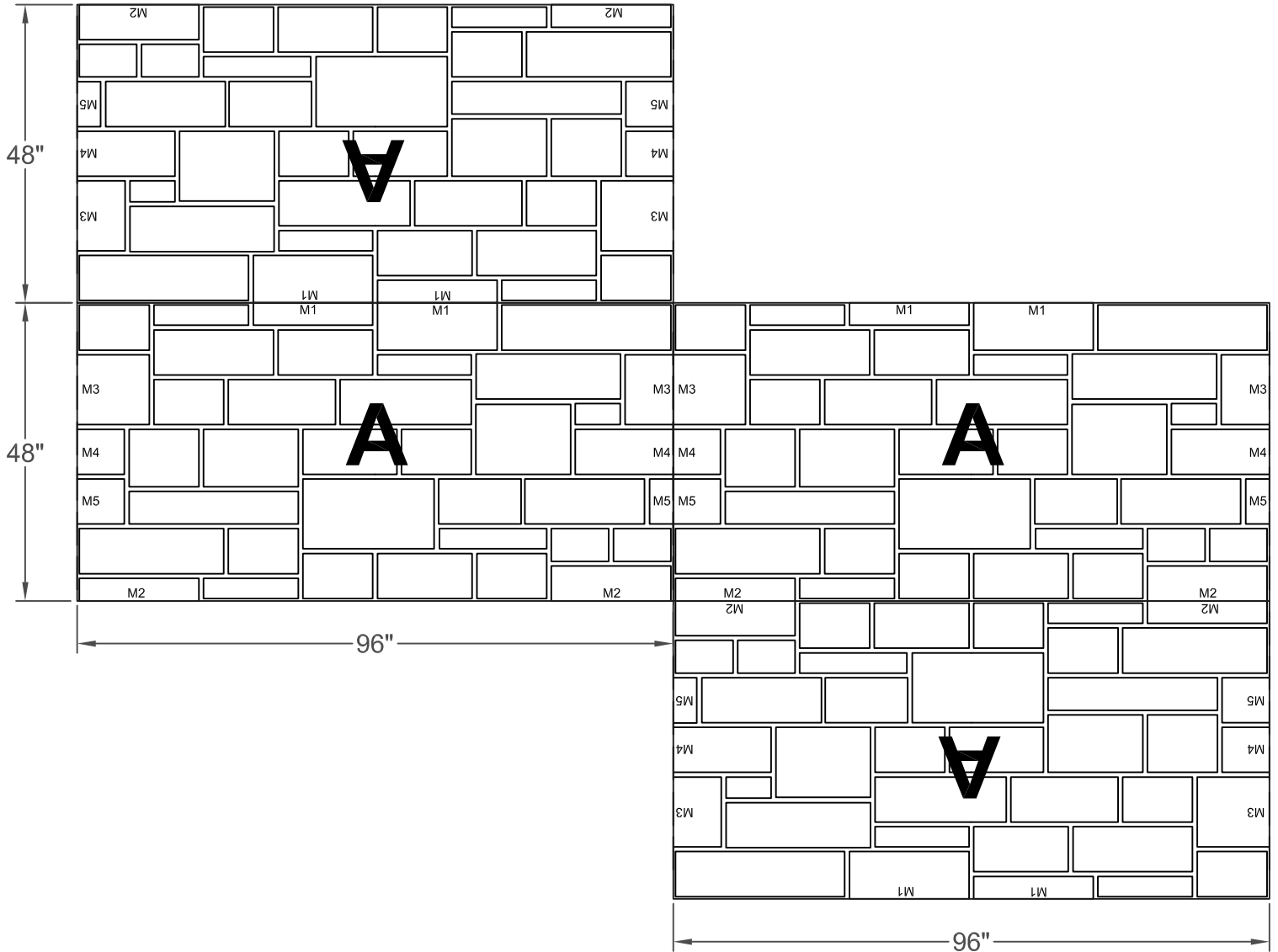
Stone & Rock

Part Size: 96" W x 48" H

Max Depth: 1.125"

Stone Sizes: 7"- 28" W
3"- 12" H

M= Match point



This document contains confidential and proprietary information of Fitzgerald Formliners, Inc. and is protected by copyright, trade secret, and other state and federal laws. Its receipt or possession does not cover any rights to reproduce, disclose its contents, or to manufacture, use, or sell anything it may describe. Reproduction, disclosure, or use without specific written authorization of Fitzgerald Formliners, Inc. is strictly forbidden.

FITZGERALD FORMLINERS

1500 East Chestnut Avenue • Santa Ana, CA 92701 • Fax (714) 245-9715
Ph: (800) 547-7760 • Ph (714) 547-6710 • www.formliners.com

Pattern can be requested in AutoCad format.

File Name: S-16999-VF-5-4-10

Page 2 of 2