



PATTERN 16967 Rebar Rip-Out Rib

1.25" Deep, #6 Rebar Rip-Out Rib

Vac-U-Form™

Styrene - Single Use.
ABS Plastic - Up to 15 reuses.

Fractured Rib

Part Size: 45"W x 120"H

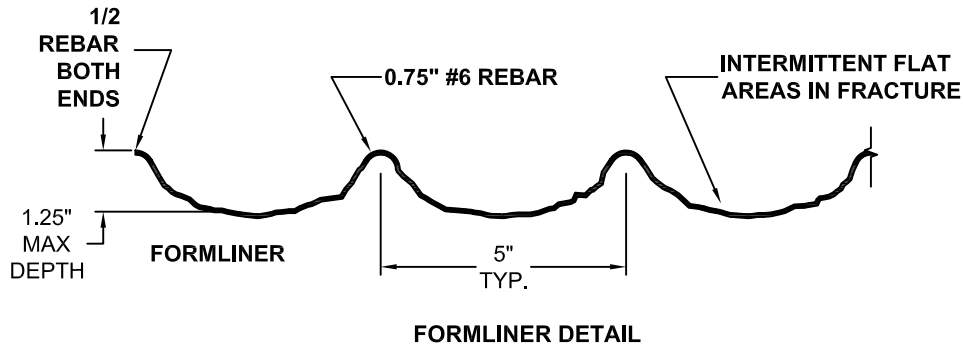
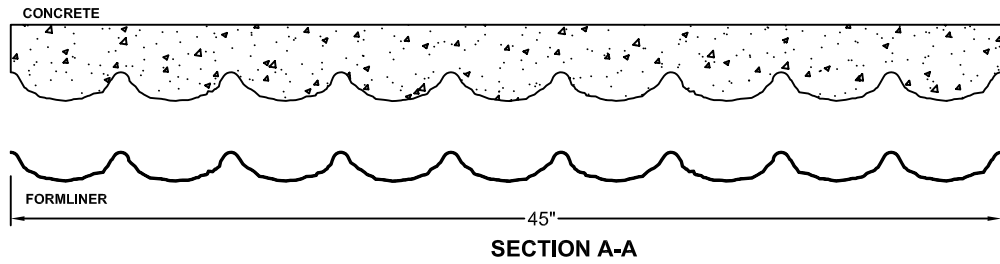
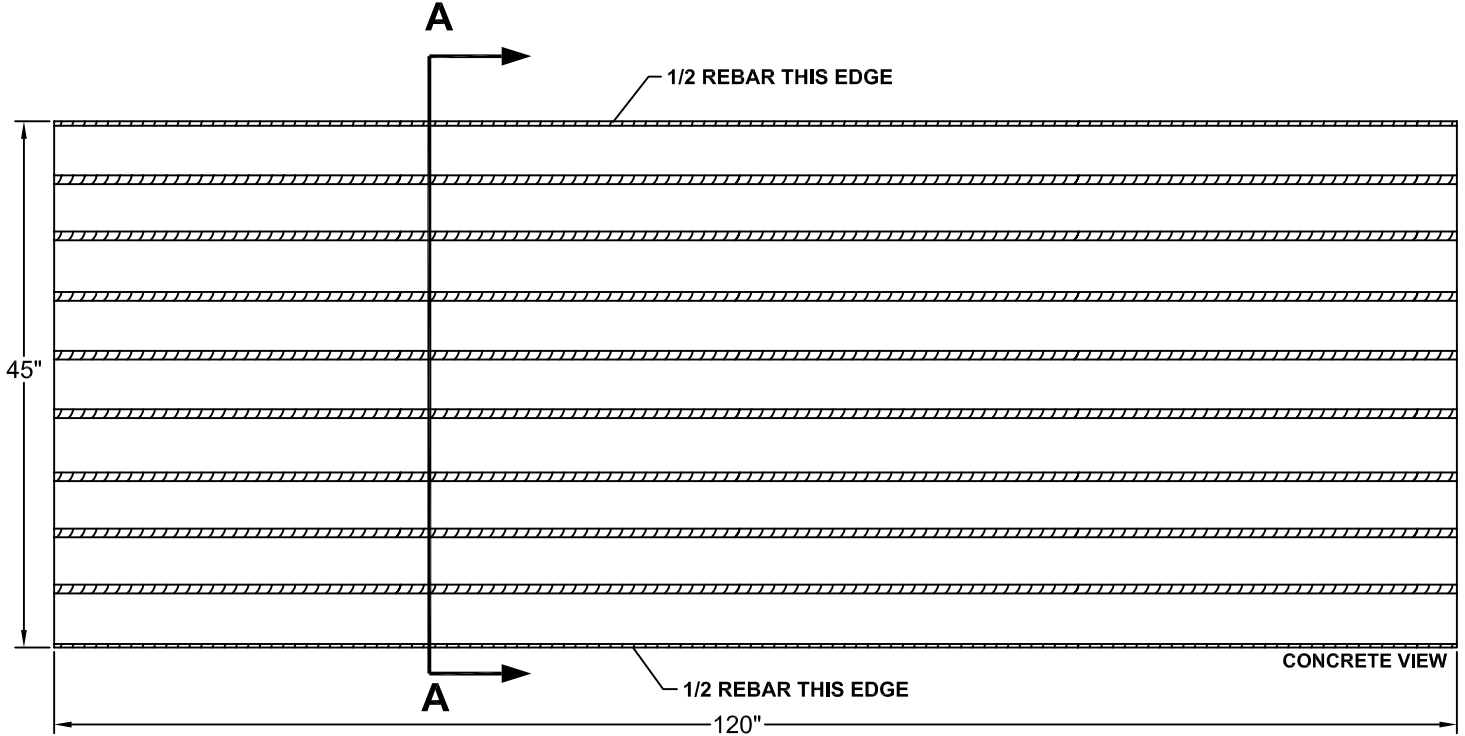
Max Depth: 1.25"

On Center: 5.0"

Peak: 0.75" (#6 Rebar)

Forming The Future™

Additional backing may be required



This document contains confidential and proprietary information of Fitzgerald Formliners, Inc. and is protected by copyright, trade secret, and other state and federal laws. Its receipt or possession does not cover any rights to reproduce, disclose its contents, or to manufacture, use, or sell anything it may describe. Reproduction, disclosure, or use without specific written authorization of Fitzgerald Formliners, Inc. is strictly forbidden.