



Forming The Future™

PATTERN 14335

Fluted Rib

0.5" Depth, 1.25" On Center

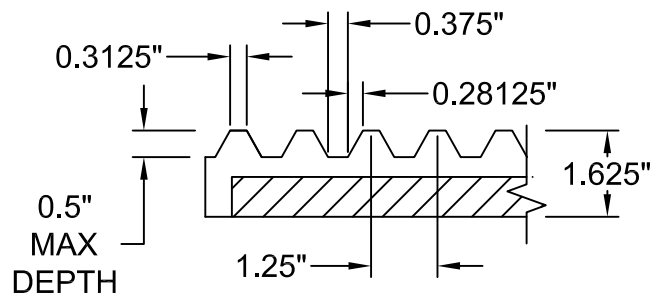
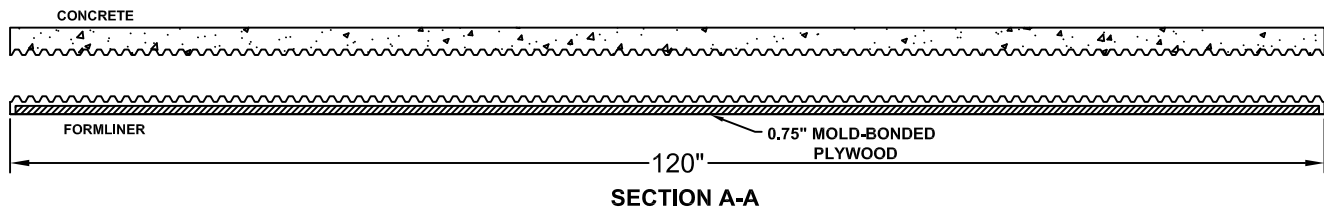
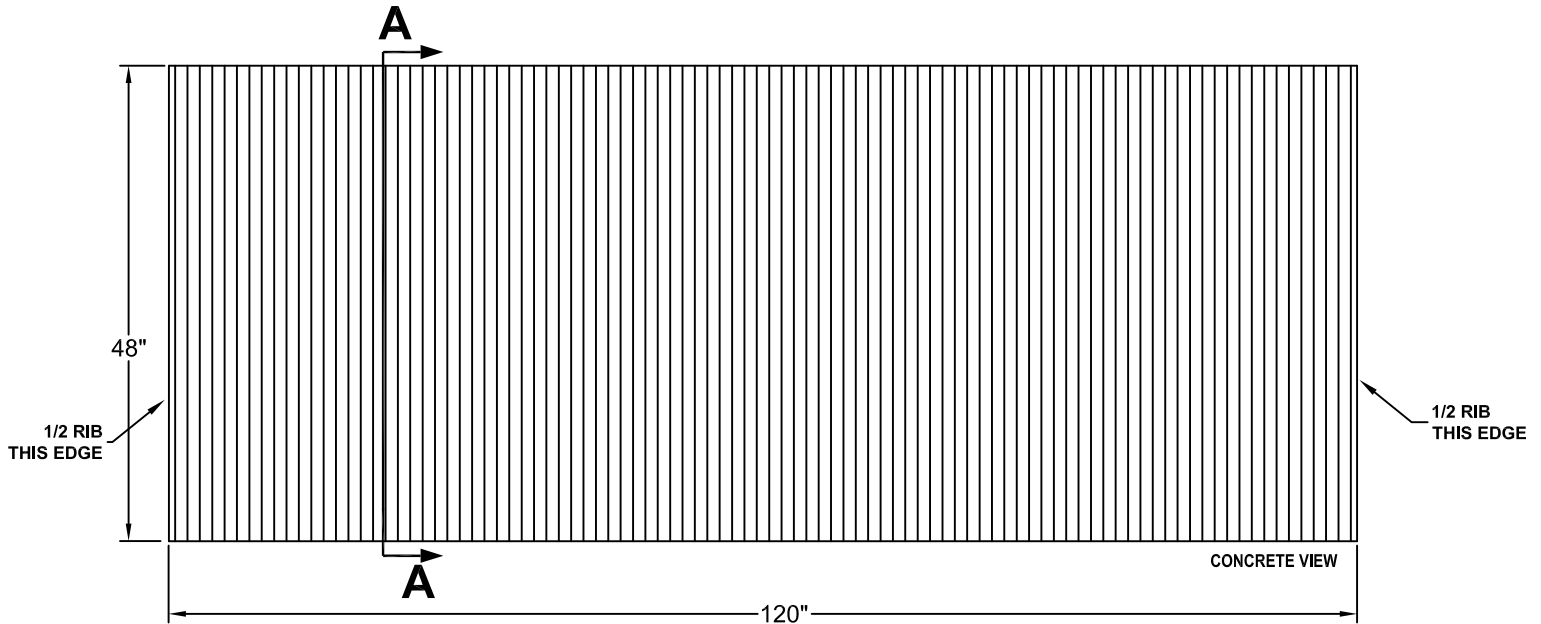
GrayLastic™

Elastomeric Urethane - up to 100 uses.
 Mold bonded to 0.75" plywood. Add 1.125" to liner thickness.

Fluted Rib

Part Size:	120"W x 48"H
Max Depth:	0.5"
On Center:	1.25"
Peak:	0.3125"
Valley:	0.375"
Draft:	0.28125"

Ribs run in 48" direction



FORMLINER DETAIL

This document contains confidential and proprietary information of Fitzgerald Formliners, Inc. and is protected by copyright, trade secret, and other state and federal laws. Its receipt or possession does not cover any rights to reproduce, disclose its contents, or to manufacture, use, or sell anything it may describe. Reproduction, disclosure, or use without specific written authorization of Fitzgerald Formliners, Inc. is strictly forbidden.